

★

KIMPTON BANNEKER

WSH HOTEL DC

1315 16TH ST NW
WASHINGTON D.C. 20036
THEBANNEKER.COM

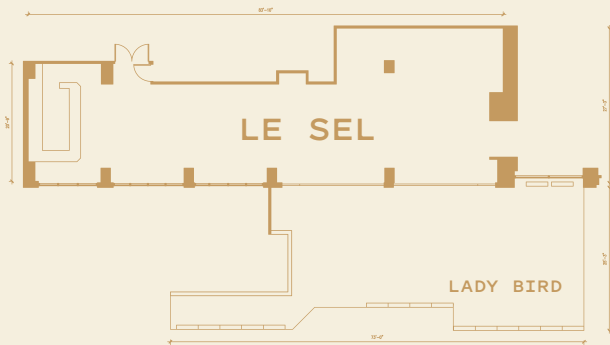
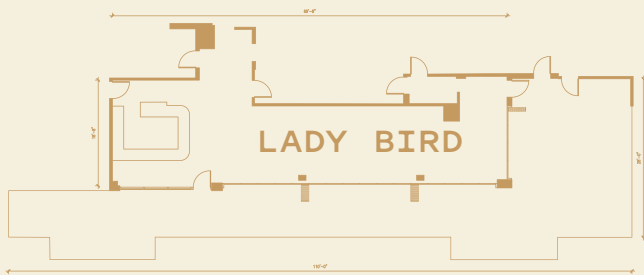
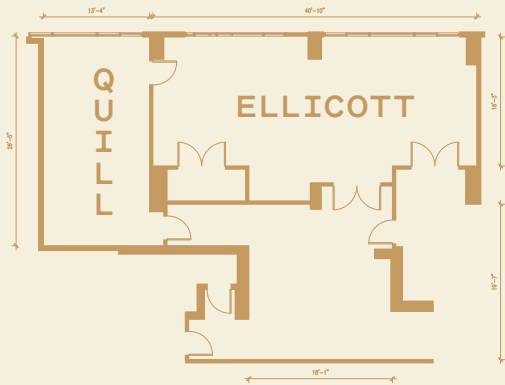


A PAGE FROM THE ALMANAC








KIMPTON BANNEKER HOTEL BRIDGES YOU TO THE BEST OF DC'S HISTORIC HIGHLIGHTS. GET IMMERSED IN THE RICH LEGACY AND URBAN CULTURE OF THE NATION'S CAPITAL FROM OUR TEN-STORY DISTINCTIVE AND SOPHISTICATED BOUTIQUE HOTEL. ENJOY BUSINESS OR LEISURE IN OUR 144 OVERSIZED GUEST ROOMS AND SUITES. CURATED FINE ARTWORK THROUGHOUT. THE 'BANNEKER' FEATURES 3,800 SQUARE FEET OF FLEXIBLE INDOOR AND OUTDOOR MEETINGS AND EVENTS SPACES. DINE IN OUR BISTRO OR IN ROOM DINING WITH OUR SEASONAL MENU'S CREATED BY CHEF LAURENT OF LE SEL. ATOP THE HOTEL DISCOVER LADY BIRD OUR YEAR-ROUND OPEN AIR ROOFTOP BAR AND TERRACE WITH ICONIC VIEWS OF WASHINGTON, D.C.

BANNEKER EVENT SPACES



WHETHER YOU'RE HOSTING AN INTIMATE DINNER PARTY OR SOMETHING A BIT MORE GRANDIOSE, KIMPTON BANNEKER OFFERS BOUTIQUE SETTINGS BEFITTING OF ANY OCCASION. OUR FLEXIBLE EVENT SPACES ALLOW FOR NEARLY ENDLESS CUSTOMIZATION. CHOOSE FROM STYLISH INDOOR SPACES OR THE ROOFTOP BAR, LADY BIRD, AN UNBEATABLE LOCATION FOR OUTDOOR WEDDINGS AND ALFRESCO GATHERINGS. LOCALLY-SOURCED FOOD CATERED BY EXECUTIVE CHEF LAURENT AND CONVERSATION-WORTHY ART ADD EXTRA TOUCHES THAT MAKE SURE MEMORIES LIVE ON LONG AFTER THE LAST GUEST DEPARTS.

EVENT ROOM	DIMENSIONS	SQ FT						RECEPTION	LB TERRACE
QUILL	26FT X 17FT	385 SQFT				14			
ELLICOTT	39FT X 18FT	795 SQFT	24	40	40	18	16	50	
LADY BIRD	INDOOR	1200 SQFT			40	20		80	40